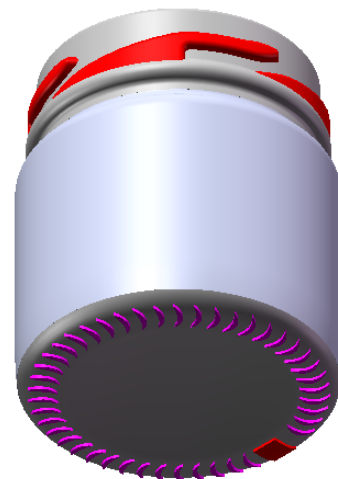




BOTTOM VIEW



|                                     |   |              |  |                  |         |   |  |   |       |                           |       |                   |
|-------------------------------------|---|--------------|--|------------------|---------|---|--|---|-------|---------------------------|-------|-------------------|
| PROCESS                             |   | PRESS & BLOW |  |                  |         |   |  | SPECIFICATION AGREEMENT ARE BASED ON TOLERANCE DIMENSIONS ONLY<br>DO NOT SCALE DRAWING<br>COPYRIGHT RESERVED. NOT TO BE COPIED IN WHOLE OR PART WITHOUT<br>WRITTEN PERMISSION |       |                           |       |                   |
| MINIMUM THROUGH BORE                |   | -            |  |                  |         |   |  |   |       |                           |       |                   |
| FILL POINT VERIFIED                 |   | NO           |  | (A)              | 1       | 40.50±0.35 WAS 41.0±0.35 MM. REV.AS PER HERO JAR NECKRING |  |   |       | 05.05.08                  |       |                   |
| TILT ANGLE                          |   | -            |  | No.              | REV.No. | REVISION  |  |   |       | DATE                      | CHK   | DRG               |
| MAXIMUM DEPTH OF STANDARD ENGRAVING |   | -            |  | FILL-POINT       |         | -- ± -- ML  |  |   |       | TITLE: 41 ML JEM JAR      |       |                   |
| MAX. GAS VOLUMES                    |   | -            |  | BRIMFUL CAP.     |         | 41.80 ± 2.0 ML  |  |   |       | CUST: EXPORT              |       | CHECKED:          |
| REF DRG No :- CD-6291               |   |              |  | WEIGHT           |         | 63.0 ± 5.0 GMS.   |  |   |       | DRAWN: Vimlesh 15.04.2008 |       | APPROVED:         |
| MOULD EQUIPMENT ORDERED BY          |   | FINISH       |  | 43 MM LUG FD 157 |         |   |  | COLOUR  | FLINT |                           |       |                   |
| PLANT                               | B |              |  |                  |         | SURFACE TREATMENT NO                                      |  |   |       | C.C.NO.                   | 42958 | DRAWING No. 42958 |
|                                     |   |              |  |                  |         |   |  |   |       |                           | A4    | REV               |
|                                     |   |              |  |                  |         |   |  |   |       |                           |       | A                 |